

2017|18 SEASON

# Lyric

LYRIC OPERA OF CHICAGO



ORPHÉE ET EURYDICE | RIGOLETTO | DIE WALKÜRE  
THE PEARL FISHERS | TURANDOT | I PURITANI | COSÌ FAN TUTTE  
FAUST | FELLOW TRAVELERS | JESUS CHRIST SUPERSTAR  
PIOTR BECZAŁA IN RECITAL | CELEBRATING BERNSTEIN





“Every performance at Lyric is a special occasion, so we hope you’ll join us for a season of unforgettable music and exquisite theater in 2017/18. Don’t miss the star power, the spectacular productions, and the opportunity to be astounded by this incredible art form. I’ll see you at Lyric!”

- *Sir Andrew Davis, Music Director*

#### CONTENTS

- 04 SEASON PERFORMANCES
- 24 SPECIAL EVENTS
- 30 BENEFITS AND BEYOND
- 32 SUBSCRIPTION SERIES
- 34 PRICING AND SEATING
- 36 CREATE YOUR OWN PACKAGE
- 38 CALENDAR



PHOTO: Steve Leonard

**Opera is an art form unlike any other—a fusion of the best of all of the performing arts—with the power to thrill and move you.** I'm excited to share Lyric's 2017/18 season, filled with wonders that you can only experience in the opera house.

We open with a new production of *Orphée et Eurydice*, our first collaboration with The Joffrey Ballet. **A passionate melding of music, drama, and dance,** this beautiful work will unfold through glorious song and inspiring ballet. It's sure to be a much-anticipated high point of Chicago's cultural season.

Prepare for **the scale and spectacle that only opera can deliver** when a new production of *Die Walküre*, the second opera in our critically-acclaimed new *Ring* cycle, takes the stage. Later in the season, Puccini's *Turandot* returns

for the first time in more than a decade in a grand, new-to-Chicago production.

You'll hear **singing that will astound you** with its strength, agility, and beauty.

Whether you join us for a journey to the exotic shores of Ceylon in *The Pearl Fishers* or the decadent court of Mantua in *Rigoletto*, **your time at Lyric is a chance to be transported** from your daily routine through the power of music and theater.

Please join us. We look forward to sharing our magnificent new season with you.

Anthony Freud  
General Director



## NEW PRODUCTION

SEP 23 | 27 | OCT 1 | 6 | 9 | 12 | 15 | **Bold** = Matinee



One of opera's most beautiful masterpieces, Gluck's exquisite drama introduces us to Orpheus, the poet and musician whose every word and note communicate the most overwhelming love for his Eurydice. Refusing to accept her death, he courageously journeys to the Underworld to bring her back to life. The music reaches true heights of eloquence and emotion. Lyric presents *Orphée et Eurydice* in the Paris version, which contains thrilling ballet sequences that will come to vivid life under the direction and choreography of the legendary John Neumeier (*pictured above*). This highly-anticipated production marks Lyric's first collaboration with The Joffrey Ballet.



“To hear [Gluck’s] songful art pour out uninterrupted...[is] to understand the overwhelming power of melody.”

- *The New York Times*

# Orphée et Eurydice

(Orpheus and Eurydice)

**GLUCK**

Sung in French with projected English translations

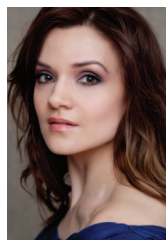
Featuring **The Joffrey Ballet**

Photo: Kiran West/Hamburg Ballet

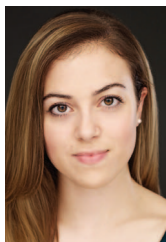
A coproduction of Lyric Opera of Chicago, Los Angeles Opera, and Staatsoper Hamburg.



KORCHAK



CHUCHMAN



SNOUFFER

**ORPHÉE**

Dmitry Korchak\*

**EURYDICE**

Andriana Chuchman†

**AMOUR**

Lauren Snouffer

---

**CONDUCTOR**

Harry Bicket

**DIRECTOR & CHOREOGRAPHER**

John Neumeier\*

**SET, COSTUME, & LIGHTING DESIGNER**

John Neumeier\*

**ASSOCIATE SET DESIGNER**

Heinrich Tröger\*

**LIGHTING REALIZATION**

Chris Maravich

**CHORUS MASTER**

Michael Black

\* Lyric Opera debut

† Ryan Opera Center alumna

**PRODUCTION SPONSORS**

THE MONUMENT TRUST

**Abbott Fund**

MARGOT AND JOSEF LAKONISHOK

ANONYMOUS DONOR

LIZ STIFFEL

N-I-B FOUNDATION

**J.P.Morgan**

THE ANNE AND BURT KAPLAN FUND OF THE MAYER & MORRIS KAPLAN FAMILY FOUNDATION

BILL AND ORLI STALEY FOUNDATION

# RIGOLETTO

VERDI Sung in Italian with projected English translations



There's no character in opera more powerfully dramatic than the court jester Rigoletto, whose acid tongue and all-consuming desire for revenge lead to catastrophe for himself and his sweet, love-struck daughter Gilda. Of all the great Verdi works, none boasts more unforgettable tunes than this one. You'll thrill to the licentious Duke of Mantua's "La donna è mobile" and Gilda's stunning "Caro nome," not to mention the most celebrated quartet in all opera. Dominating the story, though, is Rigoletto himself, one of Verdi's greatest characterizations—a complex and tragic figure, both pitiful and ferocious, with stupendous music to match.

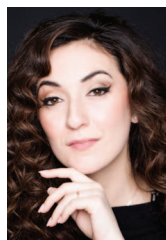


“[It’s] not just the size of his voice or the finish of his technique, although both are impressive. It’s his heart. You hear the pain behind the anger...vulnerability is evident in every phrase.”

- *Opera News* on Quinn Kelsey’s Rigoletto



KELSEY



FEOLA



POLENZANI

**RIGOLETTO**

Quinn Kelsey†

**GILDA**

Rosa Feola\*

**DUKE**

Matthew Polenzani†

**SPARAFUCILE**

Alexander Tsymbalyuk\*

**MADDALENA**

Zanda Švėde\*

**CONDUCTOR**

Marco Armiliato

**DIRECTOR**

E. Loren Meeker

**SET DESIGNER**

Michael Yeargan

**COSTUME DESIGNER**

Constance Hoffman

**LIGHTING DESIGNER**

Chris Maravich

**CHORUS MASTER**

Michael Black

\* Lyric Opera debut

† Ryan Opera Center alumni

Production owned by San Francisco Opera.

**PRODUCTION SPONSORS**

JULIE AND ROGER  
BASKES

HOWARD L. GOTTLIEB  
AND BARBARA GREIS

ROBERTA L. AND  
ROBERT J. WASHLOW



After the triumph of *Das Rheingold* in 2016/17, Lyric continues the thrilling journey through Wagner’s monumental *Ring* cycle with *Die Walküre*. This is the most deeply moving and romantic of all the *Ring* operas. Its riveting, devastating drama involves complex relationships between brother and sister, husband and wife, father and daughter. Every character is unforgettable—valiant Siegmund and Sieglinde, headstrong Brünnhilde and mighty, tortured Wotan, determined Fricka and vengeful Hunding. Wagner’s music drama burns itself on our memories, exciting us with the emotional intensity of its lyrical outbursts and its incredible power and majesty.



“Nothing short of a triumph on all fronts, intelligently conceived by the creative team, brilliantly executed by a top-flight international cast.” - *Chicago Tribune* on *Das Rheingold*, 2016



Costume design by Marie-Jeanne Lecca



GOERKE



STRID



JOVANOVICH



OWENS

**BRÜNNHILDE**

Christine Goerke

**SIEGLINDE**

Elisabet Strid\*

**SIEGMUND**

Brandon Jovanovich

**WOTAN**

Eric Owens

**FRICKA**

Tanja Ariane Baumgartner

**HUNDING**

Ain Anger\*

**CONDUCTOR**

Sir Andrew Davis

**DIRECTOR**

David Pountney

**ORIGINAL SET DESIGNER**

Johan Engels

**SET DESIGNER**

Robert Innes Hopkins

**COSTUME DESIGNER**

Marie-Jeanne Lecca

**LIGHTING DESIGNER**

Fabrice Kebour

**CHOREOGRAPHER**

Denni Sayers

\* Lyric Opera debut

**PRODUCTION SPONSORS**

**RING CYCLE 2016 - 2020**

ANONYMOUS  
DONOR

MR. & MRS.  
DIETRICH M. GROSS

GRAMMA FISHER  
FOUNDATION OF  
MARSHALLTOWN, IOWA

ADA AND WHITNEY  
ADDINGTON

**PRODUCTION SPONSORS**

**DIE WALKÜRE**

LLOYD E. RIGLER-  
LAWRENCE E. DEUTSCH  
FOUNDATION

MAZZA  
FOUNDATION

HELEN AND  
SAM ZELL

NEW-TO-CHICAGO PRODUCTION

NOV 19 | 22 | 25 | 29 | DEC 4 | 7 | 10 | **Bold** = Matinee



# The Pearl Fishers

(Les pêcheurs de perles)

**BIZET** Sung in French with projected English translations

For sheer exotic beauty, Bizet's *The Pearl Fishers* has few rivals in the entire repertoire. The opera's famed duet for tenor and baritone is a soaring melody that has turned countless opera newcomers into ecstatic fans. Bizet (who composed this work 12 years before *Carmen*) transports us to Ceylon, where two devoted friends find themselves in love with the same woman, an entrancingly beautiful priestess, Leila. From its leading men and leading lady, *The Pearl Fishers* demands the ultimate in vocal beauty and elegance to do justice to this sweepingly romantic drama.

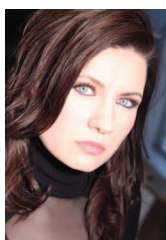


“Mr. Kwiecień is an ideal Zurga [and] Mr. Polenzani makes a poignantly believable Nadir. Their ardent, soaring performance... brought fresh urgency to the familiar music.” - *The New York Times*



Photo: Ken Howard/San Diego Opera

Production owned by San Diego Opera.



REBEKA



POLENZANI



KWIECIEŃ



SILVESTRELLI

**LEĪLA**

Marina Rebeka

**NADIR**

Matthew Polenzani†

**ZURGA**

Mariusz Kwiecień

**NOURABAD**

Andrea Silvestrelli

---

**CONDUCTOR**

Sir Andrew Davis

**DIRECTOR**

Andrew Sinclair

**SET & COSTUME DESIGNER**

Zandra Rhodes\*

**LIGHTING DESIGNER**

Ron Vodicka\*

**CHORUS MASTER**

Michael Black

\* Lyric Opera debut

† Ryan Opera Center alumnus

**PRODUCTION SPONSORS**

HARRIS FAMILY  
FOUNDATION

SYLVIA NEIL AND  
DANIEL FISCHEL

NEW-TO-CHICAGO PRODUCTION

DEC 5 | 8 | 11 | 14 | 17 | JAN 10 | 13 | 17 | 21 | 27 | **Bold** = Matinee

# TURANDOT

**PUCCINI** Sung in Italian with projected English translations



*Turandot*, Puccini's final opera and one of the biggest blockbusters in the repertoire, transports us to an exotic fantasy of ancient China. There the regal, forbidding Princess Turandot poses three riddles to each prince who wishes to win her—but anyone who fails to answer correctly is executed. Prince Calaf does answer correctly, and he declares that he's willing to die if Turandot doesn't find out his name by dawn. The plot unfolds to music of extraordinary brilliance, including "Nessun dorma," the most popular of all Italian tenor arias!



“A Ryan Opera Center breakout star, [Amber Wagner] produced a gleaming, ample and effortless sound that also was warm and womanly when it needed to be.” - *Chicago Tribune*



Photo: Reed Hummel/Nashville Opera

Production owned by Lyric Opera of Chicago, originally created by Bliss Hebert and Allen Charles Klein for Florida Grand Opera, Dallas Opera, and San Francisco Opera.

#### PRODUCTION SPONSORS

ROBERT S. AND SUSAN E.  
MORRISON



WAGNER



LA COLLA



AGRESTA



BRUGGER

#### TURANDOT

Amber Wagner†

#### CALAF

Stefano La Colla\*

#### LIÙ

Maria Agresta\* (December)

Janai Brugger\* (January)

#### TIMUR

Andrea Silvestrelli

#### PING

Zachary Nelson

#### PANG

Rodell Roselt†

#### PONG

Keith Jameson

---

#### CONDUCTOR

Sir Andrew Davis (12/5 – 1/21)

Robert Tweten (1/27)

#### DIRECTOR

Rob Kearley\*

#### SET & COSTUME DESIGNER

Allen Charles Klein\*

#### LIGHTING DESIGNER

Chris Maravich

#### CHORUS MASTER

Michael Black

\* Lyric Opera debut

† Ryan Opera Center alumni

# *I Puritani*

**BELLINI** Sung in Italian with projected English translations



Of all opera composers, none glorified the human voice more than Bellini. His final opera was *I Puritani*, in which a soprano, tenor, baritone, and bass can truly revel in some of the most thrilling vocal music ever written. Opera companies produce this work only when they can cast fabulous singers with masterful techniques and superb style. Bellini places them within a sweeping historical drama in 17th-century England, in which a passionate young couple find themselves caught up in a conflict between opposing political factions.



“Albina Shagimuratova [is] a dominant force, first among a cast of equals... she earned the thunderous ovation she got at its end.” - *The New York Times*

“[Lawrence Brownlee’s] sound has warmth and bloom...he soars up to ringing top notes, high Cs and even higher.” - *The New York Times*



Photo: Ken Howard/Metropolitan Opera

This production was originally directed by Sandro Sequi and premiered at The Metropolitan Opera. All scenery, properties, and costumes constructed by The Metropolitan Opera.



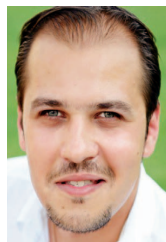
SHAGIMURATOVA



BROWNLEE



EVANS



SÂMPETREAN

**ELVIRA**  
Albina Shagimuratova

**ARTURO**  
Lawrence Brownlee

**RICCARDO**  
Anthony Clark Evans†

**GIORGIO**  
Adrian Sâmpetrea

---

**CONDUCTOR**  
Enrique Mazzola

**DIRECTOR**  
Eric Einhorn

**SET DESIGNER**  
Ming Cho Lee\*

**COSTUME DESIGNER**  
Peter J. Hall

**LIGHTING DESIGNER**  
Chris Maravich

**CHORUS MASTER**  
Michael Black

\* Lyric Opera debut

† Ryan Opera Center alumnus

#### PRODUCTION SPONSORS

DONNA VAN EEKEREN  
FOUNDATION

ANONYMOUS  
DONOR



National  
Endowment  
for the Arts  
arts.gov

# Così fan tutte

**MOZART** Sung in Italian with projected English translations



Subtitled “The School for Lovers,” this beloved Mozart comedy is a probing look into romantic relationships. It starts out with a cynical philosopher’s bet that two beautiful young women can’t remain faithful to their fiancés for 24 hours. As the intrigue deepens, the young women’s affections—and those of the young men—move into a new place that’s risky and scary. The couples’ feelings reveal themselves through the sheer genius of Mozart and his brilliant librettist, Da Ponte. *Così fan tutte* is the epitome of sophisticated, thought-provoking entertainment.



“Ana María Martínez’s soprano harks back to the golden age... as impressive in its quiet moments as it is at full power.” - *Opera News*



MARTÍNEZ



CREBASSA



POLI



HOPKINS



CORBELLI



TSALLAGOVA

*Così fan tutte* is a joint production of Opéra de Monte-Carlo and San Francisco Opera.

**DIRECTOR**  
John Cox

**DESIGNER**  
Robert Perdziola

**LIGHTING DESIGNER**  
Chris Maravich

**CHORUS MASTER**  
Michael Black

**FIORDILIGI**  
Ana María Martínez

**DORABELLA**  
Marianne Crebassa

**FERRANDO**  
Antonio Poli

**GUGLIELMO**  
Joshua Hopkins

**DON ALFONSO**  
Alessandro Corbelli

**DESPINA**  
Elena Tsallagova\*

**CONDUCTOR**  
James Gaffigan\*

\* Lyric Opera debut

**PRODUCTION SPONSORS**

THE NEGAUNEE  
FOUNDATION

RANDY L. AND  
MELVIN R. BERLIN

MARIAN A.  
CAMERON

NANCY AND  
SANFRED KOLTUN

## NEW PRODUCTION

MAR 3 | 6 | 9 | 12 | 15 | **18** | **21** | **Bold** = Matinee



Who doesn't long to be young again? It happens for the aging philosopher Faust—he sells his soul to the devil and, in exchange, is transformed into a dashing young man. He falls in love with the innocent Marguerite, with disastrous consequences. Gounod's masterpiece has been one of the world's most popular operas for more than 150 years. You'll know why when you hear the score, which simply bursts with memorable music. Marguerite's Jewel Song, the Soldiers' Chorus, the spectacular final trio—these and much more make *Faust* a sublime experience for young and old alike.



“Benjamin Bernheim was a revelation...flawless and pure, ranging from delicate pianissimo to heroic fortissimo as required. This was an astonishing performance.” - *Opera News*

# FAUST

GOUNOD

Sung in French with projected English translations



Photo: Sculpture by John Frame

A coproduction of Lyric Opera of Chicago and Portland Opera.



BERNHEIM



WALL



VAN HORN



PARKS

**FAUST**

Benjamin Bernheim\*

**MARGUERITE**

Erin Wall† (3/3-3/18)  
TBA (3/21)

**MÉPHISTOPHÈLES**

Christian Van Horn†

**VALENTIN**

Edward Parks\*

**CONDUCTOR**

Emmanuel Villaume

**DIRECTOR**

Kevin Newbury

**PRODUCTION DESIGNER**

John Frame\*

**SET & COSTUME  
DESIGNER**

Vita Tzykun\*

**PROJECTION DESIGNER**

David Adam Moore\*

**LIGHTING DESIGNER**

Duane Schuler

**CHORUS MASTER**

Michael Black

\* Lyric Opera debut

† Ryan Opera Center alumni

**PRODUCTION SPONSORS**

STEFAN EDLIS AND  
GAEL NEESON

CHICAGO PREMIERE

MAR 17 | 21 | 23 | 25 | **Bold** = Matinee

*Lyric*  
Unlimited

# FELLOW TRAVELERS

Music by Gregory Spears  
Libretto by Greg Pierce

Sung in English with projected English text

Performed at the Athenaeum Theatre

At the height of the McCarthy era in 1950s Washington, D.C., recent college graduate Timothy Laughlin is eager to join the crusade against communism. A chance encounter with a handsome State Department official, Hawkins Fuller, leads to Tim's first job—and his first relationship with a man. Drawn into a maelstrom of deceit, Tim struggles to reconcile his political convictions and his forbidden love for Fuller—an entanglement that will end in a stunning act of betrayal.





Art by Catrin Weir-Stein/Cincinnati Opera

**DIRECTOR**

Kevin Newbury

**SET DESIGNER**

Vita Tzykun

**COSTUME DESIGNER**

Paul Carey\*

**LIGHTING DESIGNER**

Thomas Hase\*

\* Lyric Opera debut

**FELLOW TRAVELERS**

An opera by Gregory Spears

Libretto by Greg Pierce

Based on the novel *Fellow Travelers*  
by Thomas Mallon

Developed and co-commissioned by  
G. Sterling Zinsmeyer and Cincinnati Opera

**Athenaeum Theatre**

2936 N. Southport Avenue, Chicago

Lyric Opera is proud to present the Chicago premiere of this work, which was praised as “a near-perfect example of fast-flowing musical drama” by *The New York Times* in its 2016 world premiere. *The Wall Street Journal* raved, “Mr. Spears’s subtle, lyrical music is beautiful without being obvious or sentimental...Kevin Newbury’s directing, particularly of the love scenes, was as honest and touching as the opera.” This chamber work will be presented in just four performances at the Athenaeum Theatre.

LYRIC PREMIERE & NEW-TO-CHICAGO PRODUCTION

APRIL 27 - MAY 20, 2018



One of the greatest stories ever told comes to life in the groundbreaking, iconic rock opera that reinvented musical theater for the modern age. With music by Andrew Lloyd Webber and lyrics by Tim Rice, this global blockbuster tells the story of the final weeks in the life of Jesus Christ, from the perspective of Judas Iscariot. As Christ's followers grow more fervent, Judas must make his fateful choice between faith and betrayal. Filled with an exciting mix of musical styles that draw upon 1970s rock, gospel, folk, and funk themes, this contemporary imagining of the biblical tale features high-energy dance and powerful storytelling. A must-see Broadway hit of the new season!





# JESUS CHRIST SUPER STAR

Photo: David Jensen/Regent's Park Open Air Theatre

**DIRECTOR**

Timothy Sheader\*

**CHOREOGRAPHER**

Drew McOnie\*

**SET & COSTUME DESIGNER**

Tom Scutt\*

**LIGHTING DESIGNER**

Lee Curran\*

\* Lyric Opera debut

**PRODUCTION SPONSORS**

THE NEGAUNEE  
FOUNDATION

MR. AND MRS.  
J. CHRISTOPHER REYES

**JESUS CHRIST SUPERSTAR**  
Music by Andrew Lloyd Webber Lyrics by Tim Rice  
In Association with The Really Useful Group Limited  
Production by The Regent's Park Theatre London



SUBSCRIBER APPRECIATION EVENT

Available only to Lyric subscribers,  
at special pricing from \$20 - \$50!

# PIOTR BECZAŁA IN RECITAL

SUNDAY, FEBRUARY 25, 2018 at 3PM

CIVIC OPERA HOUSE



“Piotr Beczala has the kind of voice you want to hang medals on. Its luminosity makes many of his fellow lyric tenors, past and present, sound by comparison like flickering candlewicks.”

- *Opera News*

Lyric is proud to present world-renowned tenor Piotr Beczala, one of the most sought-after artists of our time, in an intimate recital of opera and song at the Civic Opera House.

Following his overwhelming Lyric success in both his debut in the title role in *Faust* and as Edgardo in *Lucia di Lammermoor*, this is a thrilling opportunity to bask in the sound of a voice that has been praised as “elegant and impassioned” by *The New York Times*. He’s a frequent leading man at international opera houses from New York to Vienna— but there’s only one place to see him in Chicago next season!

PHOTO: Anja Freis



# CELEBRATING 100 YEARS OF BERNSTEIN

A Concert Featuring the Lyric Opera Orchestra, conducted by David Chase

SATURDAY, MARCH 10, 2018 at 7:30PM

CIVIC OPERA HOUSE

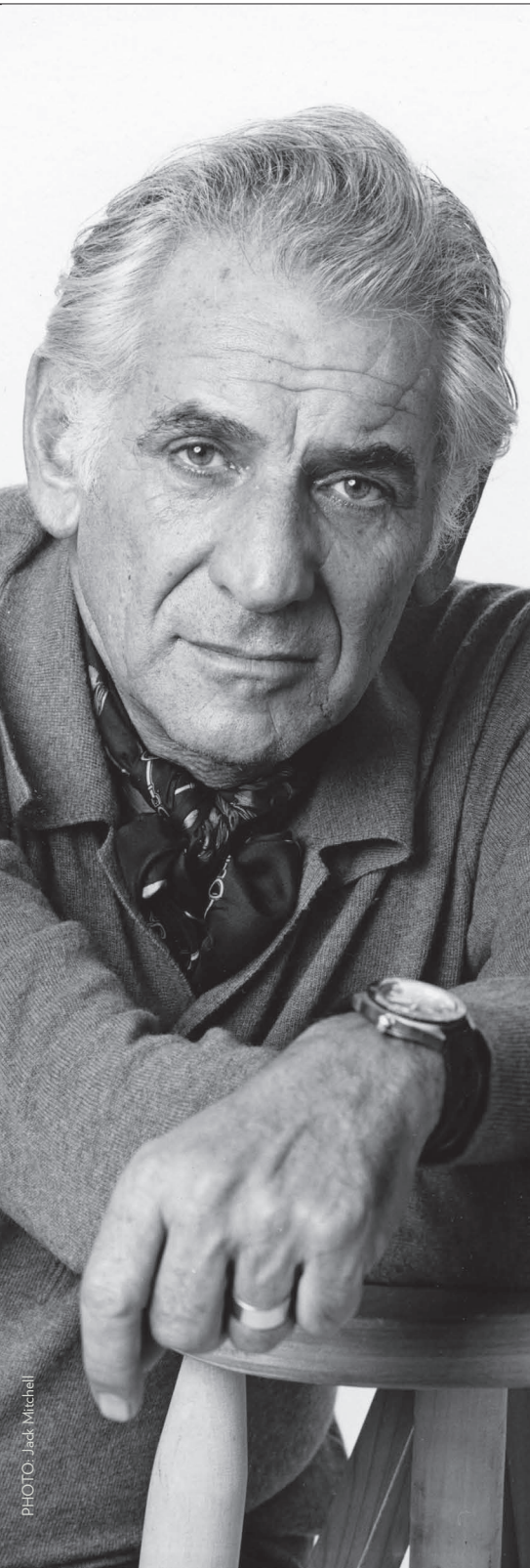


PHOTO: Jed Mitzel

His larger-than-life musical genius brought us countless treasures that built a bridge between musical theater, song, and classical music, and personified an era of American music. In 2018, the world celebrates the 100th birthday of the great Leonard Bernstein, a luminary artist whose musical legacy is as richly layered and eclectic as his viscerally exciting orchestrations.

Join the Lyric Opera Orchestra under the baton of the acclaimed Broadway conductor David Chase as Lyric pays tribute to Bernstein with a thrilling night of music. The performance will include his rarely performed, one-act opera *Trouble in Tahiti*, both funny and poignant, followed by a selection of beloved gems from the Bernstein vocal catalog, brought to life on Lyric's stage by a trio of renowned singers. Don't miss this monumental celebration of an American icon.

“I can't live one day without hearing music, studying it, playing it, or thinking about it.”

- Leonard Bernstein

# STARS OF LYRIC OPERA AT MILLENNIUM PARK

SEPTEMBER 8, 2017 at 7:30PM

*Lyric*  
Unlimited  
LYRIC OPERA OF CHICAGO



Each September, Chicago's music lovers come out to experience the Stars of Lyric Opera at Millennium Park, a free concert under the stars. Pack your picnic basket and bring your friends to enjoy a performance featuring acclaimed Lyric star voices with the Lyric Opera Orchestra. The Millennium Park concert is sure to whet your appetite for the much-anticipated season opening.



## FAMILY DAY AT LYRIC

*Lyric*  
Unlimited

SATURDAY, APRIL 7, 2018 11AM – 3PM

Lyric Unlimited is excited to offer a day of behind-the-scenes fun and exploration with our inaugural Family Day at Lyric, a wonderful way to share your love for opera with family members of all ages! You'll get exclusive access to Lyric's backstage areas, including the orchestra pit, props area, costume department, and more. Enjoy demonstrations of operatic stagecraft and costume try-ons throughout the day. The afternoon will also feature a short live performance and programming geared specifically to children aged 5 to 10—but the entire family can learn something new about opera at this unique event.



Family Day is open only to subscribers through July 2017, priced at \$10 for adults and \$5 for children. Save the date on your calendar today and make a Lyric memory at Family Day!





## THE OPERA INSIDER SERIES



Ever wish you knew more about an opera before seeing it for the first time? Ever wanted a deeper understanding of an opera you already know and love? Join us for this illuminating series with music historian and opera expert **David Buch**. Each session will discuss a work's creation, its composer, its musical and dramatic highlights, and its particular magic. You'll also hear from a special guest from Lyric's creative team who will share insights into set and costume design, interpretation, stagecraft, and more.

**Purchase dates individually or as a package to save more!**

- September 12 *Orphée et Eurydice*
- September 26 *Rigoletto*
- October 10 *Die Walküre*
- October 31 *The Pearl Fishers*
- December 5 *Turandot*
- January 23 *I Puritani*
- February 6 *Così fan tutte*
- February 13 *Faust*

See details on your renewal form or at [lyricopera.org/insider](http://lyricopera.org/insider)

## NORTH SHORE OPERA BUS FOR WEEKDAY MATINEES



Lyric Opera is pleased to continue our luxury motor coach service from the North Shore area for weekday matinee performances. Ride to the opera with fellow opera lovers! You can drive to a centrally-located local parking area, park, and let us do the driving to the Civic Opera House and back for just \$20 round-trip on the Opera Bus! Arrive in time to enjoy one of Lyric's onsite restaurants or attend our free pre-opera talk one hour before the performance. The Opera Bus may be added on by calling Audience Services at 312-827-5600 or visit [lyricopera.org/operabus](http://lyricopera.org/operabus) for details..

# OPENING NIGHT OPERA BALL

SATURDAY, SEPTEMBER 23, 2017

**5:30PM** DOORS OPEN AT THE CIVIC OPERA HOUSE

**6:30PM** *ORPHÉE ET EURYDICE*

**POST-SHOW** OPERA BALL (pictured) AT HILTON CHICAGO



Lyric Opera's Opening Night is always one of the most anticipated events of the fall cultural season—and subscribers can now exchange into this can't-miss performance with no additional fee!\*

Walk the glamorous red-carpet entrance to the Civic Opera House with photographers on hand to capture every moment of the excitement. Mix and mingle with fellow music lovers and enjoy refreshments for purchase in the sparkling Rice Grand Foyer. Then, settle in for an evening of music and dance with Lyric's highly anticipated new production of *Orphée et Eurydice*, featuring The Joffrey Ballet.

If you'd like to continue your celebration at the opera house, the Pedersen Room and Florian Bistro will remain open for ticketholders who wish to book reservations. Reservations start September 5.

For those interested in purchasing tickets for the Opera Ball, bring your appetite and your dancing shoes, because a thrilling party awaits at the Hilton Chicago Grand Ballroom following the performance. Opera Ball tickets and premium packages are available by calling the Women's Board Office at 312-827-5682.

\* Your subscription seats may not be available on Opening Night. Comparable seating will be assigned when possible.

OPENING NIGHT  
GALA SPONSOR



OPERA BALL  
SPONSORS







# LYRIC'S FAMED WINE AUCTION RETURNS APRIL 14, 2018

Join the best wineries, collectors, and sommeliers as we celebrate 30 years of wine, women, and song.

A project of the Women's Board, this marquee fundraiser auctions some of the world's greatest wines, luxury trips to exotic locales, and one-of-a-kind experiences, all from the stage of the historic Ardis Krainik Theatre!

**Wine Auction Co-Chairs:** Keith Kiley Goldstein and Nancy S. Searle

**Catalogue Sponsor:** Liz Stiffel

**2018 Honored Guest Winery:** Château Margaux

**2018 Honoree:** Shirley Welsh Ryan

**Official Airline:** American Airlines

**Auctioneers:** Hart Davis Hart

**PRESENTING SPONSOR**



Donations of rare and fine wines, champagnes and spirits, rooms in five-star hotels, and luxury gift items are appreciated at this time. Please contact the Women's Board office at 312-827-5682 or visit us at [www.lyricopera.org/wineauction2018](http://www.lyricopera.org/wineauction2018).

## BECOME A BROADWAY BENEFACTOR... 5, 6, 7, 8!

In 2013, Lyric Opera of Chicago expanded its annual repertoire to include musical theater classics, to incredible acclaim. Lyric embarked on this expansion because we find tremendous artistic value in musical theater, and we are dedicated to producing it on the same scale in which we present Mozart, Verdi, and Wagner. We aim to offer our audiences the definitive production of each piece, presented in the manner in which it was conceived.

For the thousands of musical theater lovers who have now come to find a home at Lyric each season, we have created a new giving program

that offers exciting and exclusive benefits centered around our annual musical production. Members can receive invitations to dress rehearsals, master classes, and much more.

We hope that you will join the inaugural year of our Broadway Benefactors Circle, with membership starting at \$250.



Visit [lyricopera.org/broadwaybenefactors](http://lyricopera.org/broadwaybenefactors) or call 312-827-5685 to learn more!

# BENEFITS & BEYOND

## ENGAGE MORE...



### FREE PRE-OPERA TALKS

Perfect for newcomers, opera aficionados, and anyone in between, our free pre-opera talks provide an engaging overview of the opera. Learn about the fascinating background of each production, including the opera's music, characters, composer, and historical context from a music expert. You and your guests may arrive one hour before curtain time and enjoy a free, 30-minute pre-opera talk right in the opera house. *Excludes Opening Night.*

### Invitations to Exclusive Events

You'll be invited to exclusive events throughout the season, including new subscriber invitations to Lyric Uncorked, a casual event that offers behind-the-scenes information about our operas, a visit with artists, and refreshments.



### First in Line

All subscribers get the best seats before tickets go on sale to the general public and early access to special events. If you love your seats, you'll be first in line to reserve them for seasons to come.

### Special Prices

Subscribers save 10% on any additional opera and musical tickets all season long! Purchase an 8-opera series and unlock 25% savings on additional tickets with your subscription order online or by phone through April 1. Don't forget—we also offer children's prices at \$20-\$50, and will arrange your subscription seats so that you'll all sit together.

### Subscription to Lyric Notes

Receive Lyric's monthly e-newsletter, full of opera previews and behind-the-scenes features.

### Inside Lyric

Explore Inside Lyric on [lyricopera.org](http://lyricopera.org) to enhance your opera knowledge! Find recommended reading, interviews, program notes, video features, and more.

### Connect Online

You are Lyric's community—keep in touch with us and chat with fellow opera lovers on Lyric's active social media platforms.





When you join the Lyric family, you don't just get the best prices of the season. Become part of our vibrant community of music lovers and enjoy special perks and opportunities to enhance your experience.

## ...WORRY LESS!



### No Exchange Fees

Can't make one of your shows? Exchanges are free for subscribers up to five days before a performance. *Fees apply to exchanges that include an upgrade in seating section or date. Value Dates can only be exchanged for other Value Dates.*

### TRADEONE™

Subscribers to fixed 4-, 5-, or 6-opera series may trade one opera in their lineup for one that is not. Just let us know which opera you want to trade at the time of your order or when you receive your tickets. *Fees apply.*

### Easy Payment Plans

Just 25% down secures your series with no additional processing or handling fees. You can even call us to create a custom payment plan that works for you!



### Drink and Dine at Lyric

The pleasure and comfort of dining right at the Civic Opera House are yours with two unique restaurants offering marvelous food created by Calihan Catering. Lyric also offers concessions and coat check services on every floor.

### Discounted Parking

Lyric subscribers enjoy a special low rate starting at \$12 at The Poetry Garage. To purchase discounted parking in advance, visit [thepoetrygarage.com](http://thepoetrygarage.com). *Offer valid weeknights 3pm-3am and up to 12 hours on weekends. Not valid for weekday matinees.*



# Choose from over 20 custom series

## 8-OPERA SERIES

**PLEASE NOTE:** All E Series packages have been discontinued. If you are an E Series subscriber, please see your renewal package for details on moving to a new series.

<b>A</b> MOSTLY MONDAYS	<b>B</b> MOSTLY WEDNESDAYS	<b>C</b> MOSTLY FRIDAYS	<b>D</b> ALL SATURDAYS	<b>MA</b> ALL SUNDAY MATINEES	<b>Value (V)‡</b> MIXED DAYS
<b>Orphée</b> OCT 9 MON	<b>Orphée</b> SEP 27 WED	<b>Orphée</b> OCT 6 FRI	<b>Rigoletto</b> OCT 7	<b>Orphée</b> OCT 1	<b>Orphée</b> SEP 27 WED
<b>Rigoletto</b> OCT 30 MON	<b>Rigoletto</b> OCT 19 THU	<b>Rigoletto</b> NOV 3 FRI	<b>Walküre</b> NOV 18 5:30	<b>Rigoletto</b> OCT 22	<b>Rigoletto</b> OCT 14 SAT
<b>Walküre</b> NOV 14 TUE 5:30	<b>Walküre</b> NOV 1 WED 5:30	<b>Walküre</b> NOV 30 THU 5:30	<b>Pearl Fishers</b> NOV 25	<b>Walküre</b> NOV 5 1PM	<b>Walküre</b> NOV 1 WED 5:30
<b>Pearl Fishers</b> DEC 4 MON	<b>Pearl Fishers</b> NOV 29 WED	<b>Pearl Fishers</b> DEC 7 THU	<b>Turandot</b> JAN 13	<b>Pearl Fishers</b> NOV 19	<b>Pearl Fishers</b> NOV 25 SAT
<b>Turandot</b> DEC 11 MON	<b>Turandot</b> DEC 5 TUE	<b>Turandot</b> JAN 10 WED	<b>Puritani</b> FEB 10	<b>Turandot</b> DEC 17	<b>Turandot</b> DEC 11 MON
<b>Puritani</b> FEB 13 TUE	<b>Puritani</b> FEB 7 WED	<b>Puritani</b> FEB 16 FRI	<b>Così fan tutte</b> FEB 17	<b>Puritani</b> FEB 4	<b>Puritani</b> FEB 7 WED
<b>Così fan tutte</b> FEB 26 MON	<b>Così fan tutte</b> FEB 21 WED	<b>Faust</b> MAR 9 FRI	<b>Faust</b> MAR 3	<b>Così fan tutte</b> MAR 4	<b>Così fan tutte</b> FEB 21 WED
<b>Faust</b> MAR 12 MON	<b>Faust</b> MAR 15 THU	<b>Così fan tutte</b> MAR 16 FRI	<b>Your Series has one YOU CHOOSE YOUR DATE+</b>		<b>Faust</b> MAR 6 TUE
			<b>Orphée</b> We recommend SEP 23 SAT 6:30PM OPENING NIGHT**		

### WHAT ARE "YOU CHOOSE" DATES?

Because of scheduling issues, your regular subscription seats are not available to you for these titles. We will work to provide comparable seating for the date of your choice.

## 4-OPERA SERIES

<b>A2</b> MOSTLY TUESDAYS	<b>A3*</b> ALL MONDAYS	<b>B2</b> WEEKDAYS	<b>B3*</b> ALL WEDNESDAYS	<b>C3*</b> FRIDAYS/SATURDAY	<b>D1</b> ALL SATURDAYS
<b>Walküre</b> NOV 14 TUE 5:30	<b>Rigoletto</b> OCT 30	<b>Rigoletto</b> OCT 19 THU	<b>Orphée</b> SEP 27	<b>Orphée</b> SEP 23 SAT 6:30PM OPENING NIGHT**	<b>Rigoletto</b> OCT 7
<b>Turandot</b> DEC 11 MON	<b>Turandot</b> DEC 11	<b>Pearl Fishers</b> NOV 29 WED	<b>Walküre</b> NOV 1 5:30	<b>Walküre</b> NOV 10 FRI 5:30	<b>Pearl Fishers</b> NOV 25
<b>Puritani</b> FEB 13 TUE	<b>Così fan tutte</b> FEB 26	<b>Puritani</b> FEB 7 WED	<b>Turandot</b> JAN 10	<b>Turandot</b> DEC 8 FRI	<b>Turandot</b> JAN 13
<b>Così fan tutte</b> MAR 13 TUE	<b>Faust</b> MAR 12	<b>Faust</b> MAR 6 TUE	<b>Così fan tutte</b> FEB 21	<b>Puritani</b> FEB 16 FRI	<b>Così fan tutte</b> FEB 17

+ You choose your date at time of order. Comparable seat locations assigned when possible.

\*Seats assigned after 8-opera series subscribers.

\*\*Your subscription seats may not be available on Opening Night. Comparable seating will be assigned when possible.

‡ Seat locations may vary by opera and are seated after 8-opera fixed-date subscriptions. Limited availability.



## THESE FIXED-SEAT SERIES OFFER:

- The same seating for each show
- Seats that you may renew from year to year
- Attendance on the same day of the week or a range of days that are set in advance
- Priority seating—our fixed-seat subscribers are seated first

### 5-OPERA SERIES

#### A1

ALL MONDAYS

#### Orphée

OCT 9

#### Rigoletto

OCT 30

#### Pearl Fishers

DEC 4

#### Così fan tutte

FEB 26

#### Faust

MAR 12

#### B1

MOSTLY WEDNESDAYS

#### Orphée

SEP 27 WED

#### Walküre

NOV 1 WED 5:30

#### Turandot

DEC 5 TUE

#### Così fan tutte

FEB 21 WED

#### Faust

MAR 15 THU

#### D2

ALL SATURDAYS

#### Orphée

SEP 23 6:30PM  
OPENING NIGHT\*\*

#### Rigoletto

OCT 14

#### Walküre

NOV 18 5:30

#### Turandot

JAN 27

#### Puritani

FEB 24

## Worried about date conflicts?

No problem, subscribers have free exchanges as long as they are completed five days before your performance date. For those with fewer than 8 operas in your series, you may also trade one show that is in your series for one that is not through **TRADEONE™**.

Don't see something that fits your schedule or taste?

See our  
**CREATE YOUR OWN SERIES**  
options on the next page.

### 4 or 5-OPERA MATINEE SERIES

#### MB

ALL WEDNESDAYS

**NOW 5 WEDNESDAYS**

#### Rigoletto

OCT 11

#### Pearl Fishers

NOV 22

#### Turandot

JAN 17

#### Puritani

FEB 28

#### Faust

MAR 21

#### MC

ALL SUNDAYS

#### Orphée

OCT 15

#### Walküre

NOV 26 1PM

#### Pearl Fishers

DEC 10

#### Turandot

JAN 21

#### MG

ALL THURSDAYS

#### Orphée

OCT 12

#### Rigoletto

OCT 26

#### Turandot

DEC 14

#### Così fan tutte

MAR 8

### 6-OPERA SERIES

#### F

MIXED DAYS

#### Rigoletto

OCT 14 SAT

#### Walküre

NOV 10 FRI 5:30

#### Turandot

DEC 8 FRI

#### Puritani

FEB 24 SAT

#### Faust

MAR 6 TUE

#### Così fan tutte

MAR 13 TUE

#### F1

FRIDAYS/SATURDAYS

#### Walküre

NOV 10 FRI 5:30

#### Turandot

DEC 8 FRI

#### Puritani

FEB 10 SAT

#### Faust

MAR 3 SAT



Opera evening performances are at 7:30pm except *Walküre* at 5:30pm and Opening Night of *Orphée* at 6:30pm.

Opera matinee performances are at 2pm except *Walküre* at 1pm.

Casts and programs are subject to change without notice but specified in good faith at time of printing.

# SERIES PRICING

When you choose from any of the **more than 20 custom series** on the previous pages, you not only have the ease of pre-selected dates and renewable seats of your own, you have the choice of series dates on weekdays or weekends, matinees or evenings, from 4-8 operas.

**The earlier you buy, the more you save!**

Lyric Opera's pricing is based on demand, so the sooner you buy, the less you'll pay for the same great performance. Consider this example from *Les Troyens* in 2016:

**Main Floor seat purchased on subscription:**  
**\$110**

Same seat **purchased** as an individual show **in July:**  
**\$166**

Same seat **purchased ten days prior** to the show:  
**\$299**

		Main Floor					
SERIES	Number of Operas	FIRST 22 ROWS		BB-FF	CENTER GG-MM	CENTER NN-TT	BALANCE GG-TT
		PRIME	BALANCE MF1				
A, B	8	1576	920	920			
C	8	1626	920	920	706	487	388
D	8	1904	1400	1400			
MA	8	1904	1400	1400	1016	712	440
<b>VALUE SERIES<sup>§</sup></b> <b>SAVINGS UP TO 50% OFF!</b>	8		812	737	616	536	446
F	6	1284	810	810			
A1, B1	5				435	295	230
D2 <small>INCLUDES OPENING NIGHT!</small>	5				635	445	275
A2, B2	4				348	236	184
D1 <small>NOW 4 EVENTS</small>	4				508	356	220
F1	4				388	266	193
C3 <small>INCLUDES OPENING NIGHT!</small>	4	872	594	594	516	351	268
A3, B3	4	840	568	568			
MB <small>INCREASED TO 5 OPERAS WITH SPECIAL PRICING!</small>	5	755	560	560	485	325	205
MC <small>NOW SUNDAYS</small>	4	788	592	592	512	364	256
MG	4	672	496	496	432	288	184

Pricing shown above includes discounts. Prices are subject to change. Subscriptions are not available in the blank areas above.

<sup>§</sup> Value Series subscribers may only exchange into the first three dates (excluding Sundays) of any 2017/18 opera production, otherwise upgrade fees will apply.

All prices shown are per subscription. All orders incur an additional \$6 per order handling fee and a \$2.50 per individual ticket Historic Building Fee.





Box	First Balcony				Upper Balcony	
	DRESS CIRCLE					
	A-E	F-J	K-O	P-T	A-H	J-R
	FB1	FB2	FB3	FB4	UB1	UB2
1576	1096				416	160
1626	1146	785	579	328	426	160
1904	1432				520	232
1904	1432	1072	776	504	520	304
894	705	546	412	306	339	174
1284	926				342	172
		450	315	205		
		670	485	315		
		360	252	164		
		536	388	252		
		404	286	186		
	688	540	395	237	254	110
840	656				244	100
755	620	505	370	225	235	110
788	672	536	384	228	236	128
672	552	448	328	200	208	100

Contribution level, as well as the date on which we receive your order, is taken into account when seats are assigned. Gifts of \$500 and more are acknowledged in the season program.

# CREATE YOUR OWN SERIES

ANY title. ANY date. ANY price zone.  
YOU decide what suits your taste and schedule!

## CREATE YOUR OWN (CYO) SERIES PRICING

Main Floor						
	FIRST 22 ROWS		ROWS BB-FF	CENTER GG-MM	CENTER NN-TT	BALANCE GG-TT
	PRIME	BALANCE MF1	MF2	MF3	MF4	MF5
A Pricing	199	169	152	127	110	84
B Pricing	211	185	170	143	125	107
C Pricing	239	204	190	161	142	142

Pricing shown here already includes your CYO discount. Pricing subject to change.

All prices shown are per seat. All orders incur an additional \$6 per order handling fee and a \$2.50 per individual ticket Historic Building Fee.

Seat locations will vary by opera and are seated after fixed-date subscriptions.

The ultimate in flexibility,  
**CREATE YOUR OWN SERIES**  
allow you to choose your operas and your dates. You can even mix and match sections of the house, because your seats vary from show to show. (Don't worry —you still get free exchanges as long as they are done 5 days before the performance!)



**RACHEL** loves classic titles, so she chooses:

2 tickets in the first balcony to take friends along to *Rigoletto*, *The Pearl Fishers*, and *Faust*.

2 Main Floor Prime seats to *Turandot* to take her mom for a special evening together.

And adds on an extra 2 tickets at her 10% subscriber discount for *Rigoletto* and looks forward to making it a group outing!

EXAMPLES OF  
**CREATE YOUR OWN SERIES**

**KATE** loves romantic opera “date nights” with her husband, so she chooses:

A combination of Friday and Saturday evening dates for *Orphée et Eurydice*, *The Pearl Fishers*, *Turandot*, *I Puritani*, *Così fan tutte*, and *Faust*. She writes the dates on both of their calendars so that they can plan around them and enjoy special evenings together.





## HOW TO **CREATE YOUR OWN** SERIES FOR 2017/18 IN THREE SIMPLE STEPS:

- 1** Choose from 4 to 8 operas and dates you'd like to attend from the calendar on pages 38-39.
- 2** Choose the seating area you'd like for each performance. You can mix and match your dates and seating zones as you wish. (*Prices shown below are per opera.*)
- 3 ATTEND AND ENJOY!**

Box	First Balcony				Upper Balcony	
	DRESS CIRCLE		K-O FB3	P-T FB4	A-H UB1	J-R UB2
A-E FB1	F-J FB2					
199	145	114	84	59	68	30
211	162	125	98	71	77	41
239	185	151	109	94	94	66



**ROB** likes rarely-performed works that he hasn't seen before, so he chooses:

- 1 ticket on the Main Floor to *Orphée et Eurydice* and *Die Walküre*, which he's been eager to see.
- 1 ticket in the First Balcony for *Turandot* to enjoy a more expansive view of the stage.

And he decides to sample *The Pearl Fishers* and *I Puritani* with with one ticket for each in the Upper Balcony.

**JACK** loves taking clients to the opera all season long, so he chooses

Sunday matinees for every title in the season, choosing 4 box seats for each date.

There are limitless ways to Create Your Own series. You save over single ticket prices, and you commit to giving yourself great music and theater throughout the year.

Want help creating your series?

Our Audience Services representatives are standing by at 312-827-5600 to help you build a series that matches your schedule and musical tastes!

# Don't just take our word for it!

Read what Lyric fans have to say on social media about their opera experiences!



"EVERY TIME I GO TO LYRIC IT HAS BEEN NOTHING BUT MAGIC AND WONDER."



SUNDAY	MONDAY	TUESDAY	WEDNESDAY	THURSDAY	FRIDAY	SATURDAY
<b>SEPT 2017</b>						23 <b>ORPHÉE</b> C3 D2 6:30PM
	25	26	27 <b>ORPHÉE</b> B B1 B3 V 7:30PM	28	29	30
<b>OCT 1</b>	2	3	4	5	6 <b>ORPHÉE</b> C 7:30PM	7 <b>RIGOLETTO</b> D D1 7:30PM
<b>ORPHÉE</b> MA 2PM						
8	9 <b>ORPHÉE</b> A A1 7:30PM	10	11 <b>RIGOLETTO</b> MB 2PM	12 <b>ORPHÉE</b> MG 2PM	13	14 <b>RIGOLETTO</b> F D2 V 7:30PM
15 <b>ORPHÉE</b> MC 2PM	16	17	18	19 <b>RIGOLETTO</b> B B2 7:30PM	20	21
22 <b>RIGOLETTO</b> MA 2PM	23	24	25	26 <b>RIGOLETTO</b> MG 2PM	27	28
29	30 <b>RIGOLETTO</b> A A1 A3 7:30PM	31				
<b>NOV 2017</b>						
			1 <b>WALKÜRE</b> B B1 B3 V 5:30PM	2	3 <b>RIGOLETTO</b> C 7:30PM	4
5 <b>WALKÜRE</b> MA 1PM	6	7	8	9	10 <b>WALKÜRE</b> F F1 C3 5:30PM	11
12	13	14 <b>WALKÜRE</b> A A2 5:30PM	15	16	17	18 <b>WALKÜRE</b> D D2 5:30PM
19 <b>PEARL FISHERS</b> MA 2PM	20	21	22 <b>PEARL FISHERS</b> MB 2PM	23 THANKSGIVING	24	25 <b>PEARL FISHERS</b> D D1 V 7:30PM
26 <b>WALKÜRE</b> MC 1PM	27	28	29 <b>PEARL FISHERS</b> B B2 7:30PM	30 <b>WALKÜRE</b> C 5:30PM		
<b>DEC 2017</b>						
	4 <b>PEARL FISHERS</b> A A1 7:30PM	5 <b>TURANDOT</b> B B1 7:30PM	6	7 <b>PEARL FISHERS</b> C 7:30PM	8 <b>TURANDOT</b> F F1 C3 7:30PM	9
10 <b>PEARL FISHERS</b> MC 2PM	11 <b>TURANDOT</b> A A2 A3 V 7:30PM	12	13	14 <b>TURANDOT</b> MG 2PM	15	16
17 <b>TURANDOT</b> MA 2PM	18	19	20	21	22	23
<b>JAN 2018</b>						
	1	2	3	4	5	6
7	8	9	10 <b>TURANDOT</b> C B5 7:30PM	11	12	13 <b>TURANDOT</b> D D1 7:30PM
14	15	16	17 <b>TURANDOT</b> MB 2PM	18	19	20
21 <b>TURANDOT</b> MC 2PM	22	23	24	25	26	27 <b>TURANDOT</b> D2 7:30PM



"EVERYTHING WAS FLAWLESS. THE SINGING, THE ACTING, THE SETTING, THE DESIGN, AND THE EXECUTION."



"QUITE POSSIBLY THE MOST BEAUTIFUL SINGING I HAVE EVER HEARD."



"A PHENOMENAL PERFORMANCE. I AM SO GLAD I GOT TO SEE THIS, IT WAS UNFORGETTABLE!"



SUNDAY	MONDAY	TUESDAY	WEDNESDAY	THURSDAY	FRIDAY	SATURDAY
<b>FEB 2018</b>				1	2	3
4 <b>PURITANI</b> MA 2PM	5	6	7 <b>PURITANI</b> B B2 V 7:30PM	8	9	10 <b>PURITANI</b> D F1 7:30PM
11	12	13 <b>PURITANI</b> A A2 7:30PM	14	15	16 <b>PURITANI</b> C C3 7:30PM	17 <b>COSÌ</b> D D1 7:30PM
18	19	20	21 <b>COSÌ</b> B B1 B3 V 7:30PM	22	23	24 <b>PURITANI</b> F D2 7:30PM
25 <b>BECZAŁA RECITAL</b> 3PM	26 <b>COSÌ</b> A A1 A3 7:30PM	27	28 <b>PURITANI</b> MB 2PM			
<b>MAR 2018</b>				1	2	3 <b>FAUST</b> D F1 7:30PM
4 <b>COSÌ</b> MA 2PM	5	6 <b>FAUST</b> F B2 V 7:30PM	7	8 <b>COSÌ</b> MG 2PM	9 <b>FAUST</b> C 7:30PM	10 <b>BERNSTEIN CONCERT</b> 7:30PM
11	12 <b>FAUST</b> A A1 A3 7:30PM	13 <b>COSÌ</b> F A2 7:30PM	14	15 <b>FAUST</b> B B1 7:30PM	16 <b>COSÌ</b> C 7:30PM	17 <b>FELLOW TRAVELERS*</b> 7:30PM
18 <b>FAUST</b> MA 2PM	19	20	21 <b>FAUST</b> MB 2PM	22 <b>FELLOW TRAVELERS*</b> 7:30PM	23 <b>FELLOW TRAVELERS*</b> 7:30PM	24
25 <b>FELLOW TRAVELERS*</b> 2PM	26	27	28	29	30	31
<b>APR 2018</b>		2	3	4	5	6
8	9	10	11	12	13	7 <b>FAMILY DAY</b> 11AM - 3PM
22	23	24	25	26	27 <b>JESUS CHRIST SUPERSTAR</b> 7PM	28 <b>JESUS CHRIST SUPERSTAR</b> 7PM
29 <b>JESUS CHRIST SUPERSTAR</b> 1:30PM	30					
<b>MAY 2018</b>		1	2 <b>JESUS CHRIST SUPERSTAR</b> 1:30PM	3 <b>JESUS CHRIST SUPERSTAR</b> 7PM	4 <b>JESUS CHRIST SUPERSTAR</b> 7PM	5 <b>JESUS CHRIST SUPERSTAR</b> 1:30PM & 7PM
6 <b>JESUS CHRIST SUPERSTAR</b> 1:30PM	7	8 <b>JESUS CHRIST SUPERSTAR</b> 7PM	9 <b>JESUS CHRIST SUPERSTAR</b> 1:30PM	10 <b>JESUS CHRIST SUPERSTAR</b> 1:30PM & 7PM	11 <b>JESUS CHRIST SUPERSTAR</b> 8 PM	12 <b>JESUS CHRIST SUPERSTAR</b> 1:30PM & 7PM
13 <b>MOTHER'S DAY JESUS CHRIST SUPERSTAR</b> 1:30PM	14	15 <b>JESUS CHRIST SUPERSTAR</b> 7PM	16 <b>JESUS CHRIST SUPERSTAR</b> 7PM	17 <b>JESUS CHRIST SUPERSTAR</b> 1:30PM & 7PM	18 <b>JESUS CHRIST SUPERSTAR</b> 7PM	19 <b>JESUS CHRIST SUPERSTAR</b> 1:30PM & 7PM
20 <b>JESUS CHRIST SUPERSTAR</b> 1:30PM						

**CREATE YOUR OWN SERIES PRICE COLOR KEY**

**A** Price Dates **B** Price Dates **C** Price Dates

Color key not applicable to Fixed Series subscriptions.

**OTHER EVENTS**

**Special Events** **Musical**

\*Performed at the Athenaeum Theatre



PHOTO: Name Price/Edmonton Opera

**25% down secures your seats | See 4 operas from just \$100!**  
Unlock the ultimate in flexibility with **FREE EXCHANGES**  
and our **CREATE YOUR OWN** Series!

**SUBSCRIBE NOW** 312 827 5600 | [LYRICOPERA.ORG](http://LYRICOPERA.ORG)

# LYRIC OPERA 2017|18 SEASON

## 8 NEW-TO-CHICAGO PRODUCTIONS

**Anthony Freud** General Director  
**Sir Andrew Davis** Music Director

**LYRIC OPERA OF CHICAGO**  
20 NORTH WACKER DRIVE  
CHICAGO ILLINOIS 60606

NON-PROFIT ORG.  
U.S. POSTAGE  
**PAID**  
CHICAGO, IL  
PERMIT NO. 6047